

Title

Improved coupling joint for driving shaft of cyl. oil lubricator

Engine Type : K/L/S 50-80MC(E)

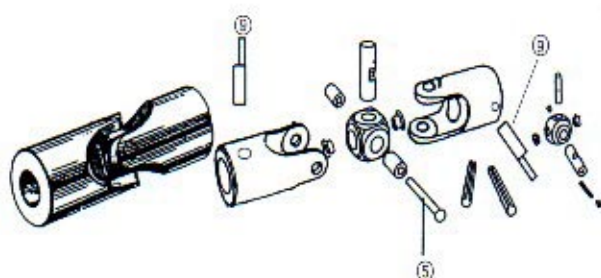
Recently, some accidents were reported from ships fitted K/L/S-MC type engine in which the pin (⑤ or ⑨) for universal joint had broken caused by wear.

Possible causes for this troubles are considered to be:

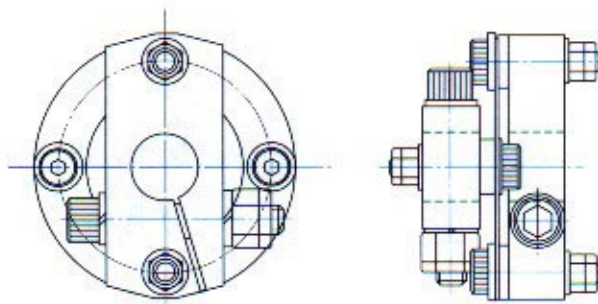
- Thermal expansion of cylinder frame
- Lack of lubricant
- Misalignment of driving shaft

It is recommended to check the wear condition of the subject universal joints on your engine(s).

As a countermeasure hereafter we introduce the joint of plate-spring type. Please consider to adopt the new type joint for safety.



Original one (universal joint)



Improved one(plate-spring type)

Hitachi Zosen Diesel Service Corporation

Tokyo Office
Palace Side Bldg.
1-1-1, Hitotsubashi, Chiyoda-ku,
Tokyo, 100 Japan
TEL : +81-3-3215-1722
FAX : +81-3-3217-8588
TLX : 222-2156

Osaka Office
2-3-81, Kizugawa, Naniwa-ku,
Osaka 556 Japan
TEL : +81-6-562-3411
FAX : +81-6-562-2900
TLX : 524-2101

Singapore Office
15, Benoi Road, Singapore,
6298888
TEL : +65-863-1490
FAX : +65-861-7579
TLX : HZSIN RS 21906