



Hitachi Zosen Diesel & Engineering Co., Ltd.

日立B&W型 機関部品情報

発行番号：HZD&E02-01、発行年月：平成14-05

標題

“圧力計、温度計の コードブックの紹介”について

対象機種：全機種

これまで取扱説明書のコードブックの部品の紹介の中に、圧力計、温度計が含まれておらず、部品の照会、発注に不便をお掛けしておりましたが、今後は部品名と合せて添付のコードブックのPLATE No.とITEM No.により部品の照会および発注をしていただくようお願い致します。

〈添付〉

PRESSURE GAUGE

PLATE 91501-01A

THERMOMETER

PLATE 91502-01A

REMOTE THERMOSENSOR

PLATE 91503-01A

日立造船ディーゼルアンドエンジニアリング株式会社

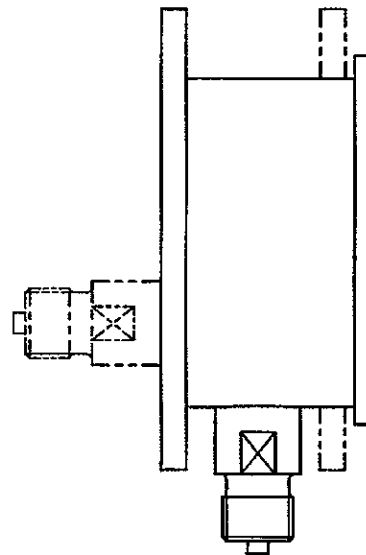
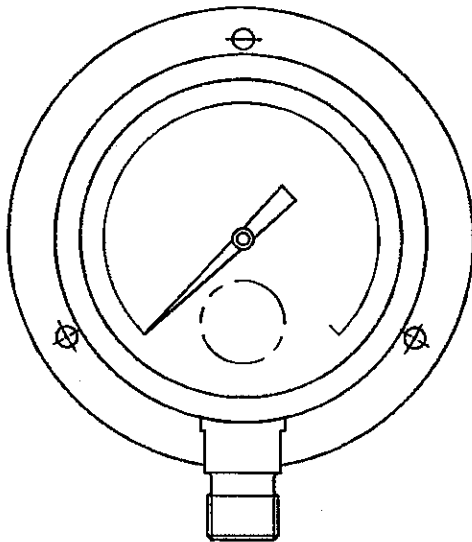
■ 連絡先

東京営業	業／	TEL.(03) 3215-1722	FAX.(03) 3217-8588
大阪営業	業／	TEL.(06) 6562-3411	FAX.(06) 6562-2900
技術サービス部	／	TEL.(06) 6562-3437	FAX.(06) 6562-4300
シンガポール支店	／	TEL. 65-6863-1490	FAX. 65-6861-7579
西日本地域			
(株)アイメックスディーゼルサービスグループ	／	TEL.(08452) 2-5491	FAX.(08452) 2-8416



PRESSURE GAUGE

PLATE 91501-01A



H01	H13
H02	H14
H03	H15
H04	H16
H05	H17
H06	
H07	
H08	
H10	
H11	
H12	



PRESSURE GAUGE

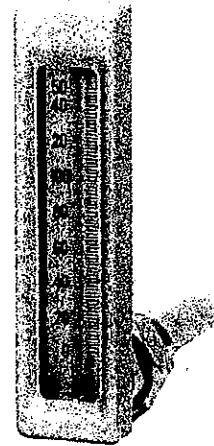
PLATE 91501-01A

Item No.	Part Description	
On engine side		
H01	Main bearing lube oil inlet	
H02	Pston cooling oil inlet	
H03	Camshaft bearing lube oil inlet	
H04	Turbocharger lube oil inlet	
H05	Fuel oil inlet	
H06	Fuel oil inlet after overflow valve	
H07	Cylinder cooling water inlet	
H08	Scavenging air	
H09	Control air	
H10	Safety air	
H11	Sealing air for exhaust valve	
H12	Pilot pressure to actuator	
On emergency console		
H13	Main bearing lube oil inlet	
H14	Camshaft bearing lube oil inlet	
H15	Turbocharger lube oil inlet	
H16	Cylinder cooling water inlet	
H17	Starting air	

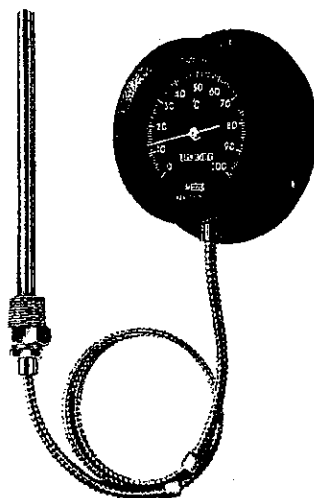
H01
 H02
 H03
 H04
 H05
 H06
 H07
 H08
 H09
 H10
 H11
 H12
 H13
 H14
 H15
 H16
 H17



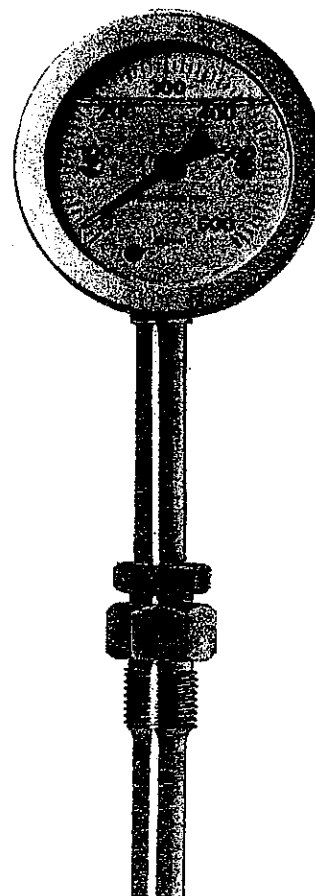
Type A : Streight type



Type B : Angle type



Type C : With capillary tube type



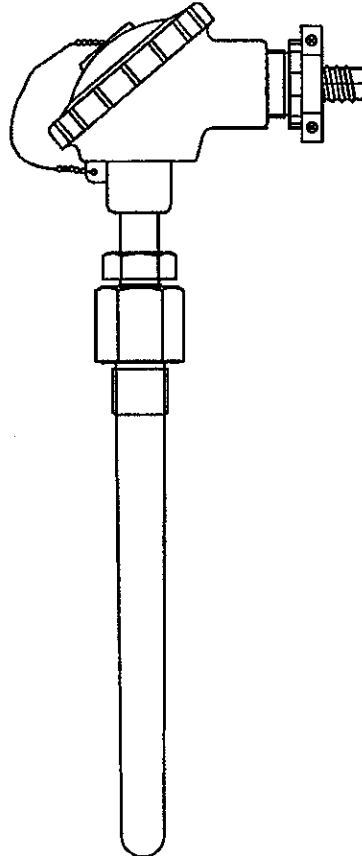
Type D : Dial type



THERMOMETER

PLATE 91502-01A

Item No.	Part Description	
H01	Main bearing lube oil inlet	
H02	Piston cooling oil outlet (each cylinder)	
H03	Camshaft lube oil inlet	
H04	Camshaft lube oil outlet	
H05	Turbocharger lube oil inlet (MET, TPL)	
H06	Turbocharger lube oil outlet (MET, TPL)	
H07	Fuel oil inlet	
H08	Cylinder cooling water inlet	
H09	Cylinder cooling water outlet (each cylinder)	
H10	Turbocharger cooling water outlet (VTR)	
H11	Air cooler cooling water inlet	
H12	Air cooler cooling water outlet	
H13	Charge air before air cooler	
H14	Charge air after air cooler	
H15	Charge air scavenging air receiver	
H16	Exhaust gas cylinder outlet	
H17	Exhaust gas turbocharger inlet	
	Please state thermometer type and range.	



H01	H11
H02	H12
H03	H13
H04	H14
H05	H15
H06	H16
H07	H17
H08	H18
H09	
H10	



H19



REMOTE THERMOSENSOR

PLATE 91503-01A

Item No.	Part Description	
H01	Main bearing lube oil inlet	
H02	Piston cooling oil outlet (each cylinder)	
H03	Camshaft lubu oil inlet	
H04	Camshaft lubu oil outlet	
H05	Turbocharger lube oil inlet (MET, TPL)	
H06	Turbocharger lube oil outlet (MET, TPL)	
H07	Turbocharger lube oil (VTR)	
H08	Fuel oil inlet	
H09	Cylinder cooling water inlet	
H10	Cylinder cooling water outlet (each cylinder)	
H11	Turbocharger cooling water outlet (VTR)	
H12	Air cooler cooling water inlet	
H13	Air cooler cooling water outlet	
H14	Charge air before air cooler	
H15	Charge air after air cooler	
H16	Charge air scavenging air receiver	
H17	Exhaust gas cylinder outlet	
H18	Exhaust gas turbocharger inlet	
H19	Thrust pad	